

ABOUT US

Crownstone is a family run business engaged in quarrying, manufacturing and processing of natural stone products sourced from across India. We cherish our years of experience of quarrying and manufacturing natural stone which has helped us to have in-depth knowledge of each stone's unique properties. We have our Head Office and our processing unit centred in Kota, Rajasthan which is the sandstone hub with more than five hundred stone quarries in its peripheral boundaries. We are best accessible to raw material source having richest deposits of sand stones in India.

Our processing unit is equipped with block cutters, calibration machine, edge cutting machines, polishing machines to process natural stone in variety of sizes and finishes. Apart from our own production facilities, we have strong relationship with yards and factories that specialise in other products which are not our core products.

At Crownstone, we make sure our founding principles of Integrity, Excellence and Reliability are displayed through our manufactured products. Stone is crafted by nature, we do our best to beautify it and make it perfect for hard landscaping all around the globe.



HOW ARE WE BETTER ?



Quality

Quality is never an accident; it is always the result of high intention, sincere effort, intelligent direction and skillful execution. Our quality controlling team pre selects the stone at the quarry for colour and evenness of spiltting, to ensure a clean riven textured surface. It is re-checked on reaching our yards for manufacturing and processing. Final inspection is done for each piece of stone prior to packing.



Manufacturing Facility

At Crown Stone, all our products are manufactured and processed in house. Our processing unit is equipped with state of the art machinery for sawing, calibrating, edge cutting, flaming, honing and polishing of stones. . Our dedicated team of skilled and experienced stonemasons can supply stone hand-dressed on templates as per architect's specifications.



Packaging

We at Crown Stone understand that good packaging is very important to ensure the quality of our material. All our products are packed in wooden crates and the wood used in the crates are chemically treated to protect it from termite or other damage in long run. All crates are tied well with belts so as to give extra strength to the crates and are shrink wrapped to protect the material from outside dust and moisture. Thermocol sheets/foam sheets are placed on all sides so as to give extra precaution to sawn and shotblasted pavings. All crates are properly labelled before getting stuffed in the containers. We also provide client's branding on the crates if required.



Real-time Order Status Information

We give our customers an expected date of dispatch as soon as the order is received. The customer is updated with real-time processing stage of the material on request. In case of any delay in dispatch due to unavoidable circumstances, the customer is well informed on time.



Delivery

On time delivery of our orders is core principle of our business and we ensure this by maintaining a large quantity of raw material stock in all colours for un-interrupted supplies right through the year.

SANDSTONES

AUTUMN BROWN

Autumn brown sandstone has warm mid-brown shades allowing a distinctive and unique look in each project. The warm tones of this sandstone compliments well with greenery of the gardens for a picture perfect landscape. This stone is available for a variety of products such natural cleft pavings, sawn pavings, copings, cobbles, steps, pier caps, jumbo slabs, etc.

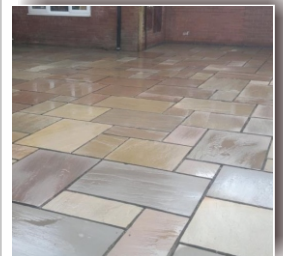


KANDLA GREY



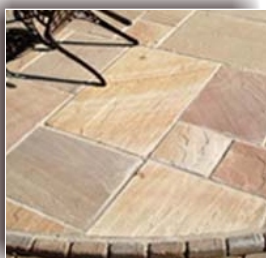
Kandla grey sandstone is one of the most popular Indian sandstone due to consistent light and mid grey tones making it a perfect paving material. The presence of minor colour tonal variations and ability to withstand toughest climatic conditions has made this stone a popular choice for most of the traditional and contemporary designs. This stone is available for a variety of products such natural cleft pavings, sawn pavings, copings, cobbles, steps, pier caps, jumbo slabs, etc.

RAJ GREEN



Raj Green sandstone has an autumnal range of colours with greens and browns which syncs well with any application whether large commercial area or a small courtyard. Raj green sandstone creates mesmerizing and interesting landscape projects. This stone is available for a variety of products such natural cleft pavings, sawn pavings, copings, cobbles, steps, pier caps, jumbo slabs, etc.

RIPPON BUFF



Rippon buff sandstone is a blend of warm colours of buff, beige and green with a coloured natural ripen effect running through the stone.

This stone is available for a variety of products such natural cleft pavings, sawn pavings, copings, cobbles, steps, pier caps, jumbo slabs, etc.

SANDSTONES

CAMEL DUST

Camel dust sandstone has a yellow base with subtle golden brown veins running through the surface of the stone. This stone is widely used for both interior and exterior applications due its natural beauty and contemporary appeal at the same time.

This stone is available for a variety of products such natural cleft pavings, sawn pavings, copings, cobbles, steps, pier caps, jumbo slabs, etc.



MODAK



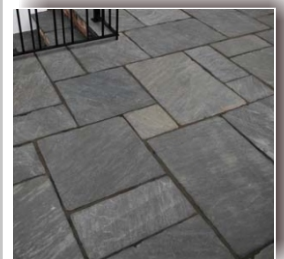
Modak Sandstone has mix shades of pink, yellow , beige and brown. It comes with plenty of variations from tile to tile and is suitable for both interior and exterior applications.

This stone is available for a variety of products such natural cleft pavings, sawn pavings, copings, cobbles, steps, pier caps, jumbo slabs, etc.

SAGAR BLACK

Sagar Black sandstone comes with dark brown to black tones. This sandstone has moderate to heavy natural texture which makes the hardscape look bold, creative and colourful.

This stone is available for a variety of products such natural cleft pavings, sawn pavings, copings and jumbo slabs.



SLATE GREY



Slate grey sandstone is a blend of dark grey to black shade tones. It blends well with the natural colors of a garden patio and is also dark enough to stand out as a featured entrance stone against lighter background architecture.

This stone is available for a variety of products such natural cleft pavings, sawn pavings, copings, cobbles, steps, pier caps, jumbo slabs, etc.

SANDSTONES

LIMESTONES

TWO TONE



With a combination of buff and grey tones and additional natural markings throughout, this colour is flawlessly suitable for creating a clean and crisp contemporary design. This stone is available for natural cleft pavings and sawn pavings.

FOSSIL MINT



Mint sandstone has a light mint undertone with occasional fern-like fossil markings and some warmer orange and brown tones throughout. This stone has its own charm due to these fossil imprints and enhance the beauty of any patio or landscape project.

This stone is available for natural cleft pavings and sawn pavings.

Kota blue limestone is a blend of greenish blue colour and grey with a uniform natural split surface.

It is dense with low water absorption and its lightly textured surface makes it a popular choice for applications where a flat surface is required.

KOTA BLUE



Kota black limestone with a consistent shade of black is stunning and a unique stone. It has a typical limestone texture that is generally smooth with occasional raven patches.

This stone is the first choice when it comes to all black stone and is used extensively for contemporary garden designs as well as bold and mesmerizing interiors.

KOTA BLACK



NATURAL CLEFT PAVINGS

Specifications -

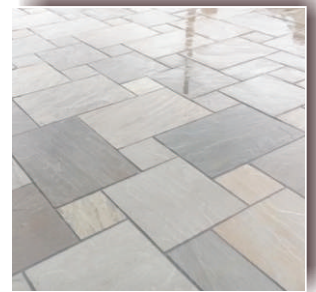
- Top Finish : Natural, Brushed, Tumbled, Shotblasted/Sandblasted, Flamed
- Bottom Finish : Natural or Calibrated
- Edge Finish : Hand Dressed or Sawn

Dimensions:

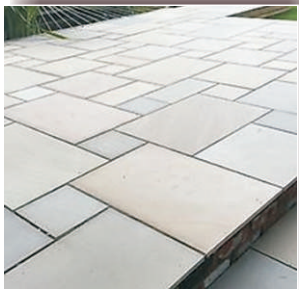
- 60 series (sizes in mm) : 600x900, 600x600, 600x290, 290x290
- 56 series : 560x840, 560x560, 560x420, 560x275, 275x275

Thickness:

- Natural Bottom Finish : 15-25mm
- Calibrated Bottom Finish : 18mm | 20mm | 22mm | 25mm | 30mm
(Please allow a tolerance of +/- 2mm)



SAWN PAVING



Specifications

- Top Finish : Honed, Shotblasted, Brushed, Polished and Flamed
- Bottom Finish : Sawn
- Edge Finish : Sawn, Chamfered

Dimensions

- 60 series (sizes in mm) : 600x900, 600x600, 600x290, 290x290
- 56 series : 560x840, 560x560, 560x420, 560x275, 275x275

Thickness:

- Calibrated Bottom Finish : 18mm | 20mm | 22mm | 25mm | 30mm | 40mm
(Please allow a tolerance of +/- 2mm)

Specifications

- Top Finish : Natural
- Bottom Finish : Natural or Calibrated
- Edge Finis : Hand-dressed, Machine-cut or Bull-nosed
- Dimensions : 12"x48", 12"x60", 12"x72" (sizes in inches)
14"x48", 14"x60", 14"x72" (sizes in inches)
16"x48", 16"x60", 16"x72" (sizes in inches)
- Thickness : 25mm | 50mm (Please allow a tolerance of +/- 2mm)

COPINGS



PRODUCTS

Cobble Stones or setts can be used as path edgings, walkways or the most common use is to use cobbles for the entire driveway area. Natural split stones are the perfect choice to make cobble stone driveways and six side sawn stones can be used to create more precise geometric and contemporary looking driveways.

Specifications

- Top Finish : Natural or Sawn
 - Bottom Finish : Natural or sawn
 - Edge Finish : Hand-dressed or Sawn edges
 - Dimensions : 100x100, 140x140, 200x100, 200x100 (sizes in mm)
 - Thickness : 30-50, 40-60, 60-80, 90-110 (sizes in mm)
- *Custom Sizes and thickness available upon request.

COBBLE STONES



STEPS



CrownStone steps add to the beauty of your garden stairway or patio. These steps are handcrafted and finished to perfection by our skilled craftsmen. Natural stone steps enhance the elegance of any patio or stairway and can also be used for garden benches.

Specifications

- Top Finish : Natural
 - Bottom Finish : Natural or Calibrated
 - Edge Finish : Hand-dressed, Sawn
 - Dimensions (sizes in inches) : 48"x12", 60"x12", 72"x12", 48"x14", 60"x14", 72"x14", 48"x16", 60"x16", 72"x16" (sizes in inches)
 - Thickness : 6" /7" or 150mm/180mm calibrated
- *Custom Sizes and thickness available upon request.

Jumbo Slabs are used as Barbecue slabs, exterior countertops, protective covering for wall copings, exterior kitchen or any other exterior design or landscaping project.

Our natural stone Jumbo Slabs are available in natural top, calibrated or natural bottom and hand dressed edges.

Specifications

- Top Finish : Natural
 - Bottom Finish : Natural or Calibrated
 - Edge Finish : Hand-dressed
 - Dimensions : 48"x24", 60"x24", 72"x24", 72"x36", 72x48" (sizes in inches)
 - Thickness : 2" or 50mm calibrated
- *Custom Sizes and thickness available upon request.

JUMBO SLABS



*Custom Sizes and thickness available upon request.

PRODUCTS

Pier Caps or Pillar Caps add a natural touch and complete the look of your pillars or columns. A Pier cap serves both as crowing piece of a pillar as well as protects your pillars from damaging weather conditions.

Specifications

Top Finish	: Natural
Bottom Finish	: Natural or Calibrated
Edge Finish	: Hand-dressed or Sawn
Dimensions	: 20''x20'', 24''x24'', 28''x28'', 30''x30'' (sizes in inches)
Thickness	: 2''/3'' or 50mm/75mm calibrated

PIER CABS



CIRCLES



A stone circle adds a distinctive feature to your garden or patio project and gives a soothing look. Natural stone circles enhance the beauty of your outdoor or indoor design projects.

Specifications

Top Finish	: Natural
Bottom Finish	: Natural or Calibrated
Edge Finish	: Hand-dressed
Dimensions	: 2.4m diameter kit 2.7m diameter kit with squaring off (corners) 3.3m diameter kit 3.6m diameter kit with squaring off (corners)
Thickness	: 15-25mm or 22mm Calibrated

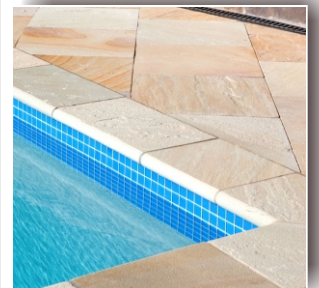
Our range of bull nosed products includes fire place hearths, kitchen slabs, steps, stair treads and pool copings. Bull nosed edges give a contemporary look to these products and add to the architectural appearance.

Specifications

Top Finish	: Natural or sawn
Bottom Finish	: Sawn or Calibrated
Edge Finish	: Sawn and Bull nosed
Dimensions	: As per order.
Thickness	: 30mm/45mm/50mm Calibrated

*Custom Sizes and thickness available upon request.

BULL NOSED PRODUCTS



*Custom Sizes and thickness available upon request.



CROWN STONE

CREATING NATURALLY BEAUTIFUL LANDSCAPES



**NATURAL STONE
LANDSCAPING PRODUCTS**

HEAD OFFICE:

F-242, Kuber Industrial Area Extension, Ranpur

Kota-324005 Rajasthan, India

Email: sales@crowstone.in Phone : +917838736111

Web : www.crownstone.in